

17 *Li Yue*: This was too wide for black; D would have been better. If White invaded as shown in Diagram 3, it would be difficult for Black to attack, and it leaves ▲ in danger.

26 *Li Yue*: This is a good move for White; he now has eyeshape.

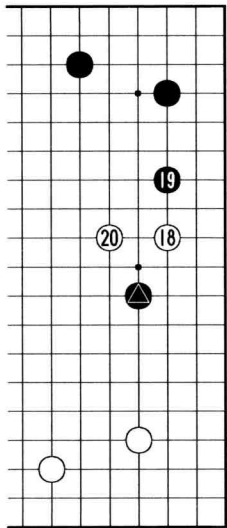


Diagram 3: Variation from move 18

27 *Ron Polak*: If Black intends to cut off the stones at 20, he will put a significant burden on White's stones at the bottom

30 *Li Yue*: White makes a tough, "do or die", decision in the heat of the game, and go for killing Black.

33 *Li Yue*: It's a difficult fight

33 *Ron Polak*: Will White dare to make that second cut?

33 *Li Yue*: It's complicated for White, but playable.

34 *Ron Polak*: Hooray! It's a daring warrior! Perhaps he is taking courage from the audience of 250 people on KGS ...

43 *Li Yue*: Black will collapse if White plays G - white needs to find that tesuji.

44 *Li Yue*: Ah, this move works as well!

25 *Li Yue*: Black can consider playing as in Diagram 4 and making E and F miai. By taking 25 in Diagram 4 before White has the chance to do so as 26 in the actual game, he gives himself good shape and removes eyeshape for White.

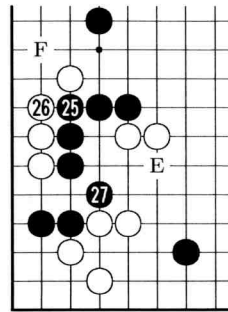


Diagram 4: Variation from move 25

44 *Li Yue*: I am leaving now; Ron will continue the analysis.

49 *BGAAdmin*: Macfadyen has used 70 minutes, Cann 65

50 *Ron Polak*: This is the only move here; trying to find an exit for the group of stones around move 30. These fights are very time-consuming; a single wrong move ends the game.

54 *Ron Polak*: It is absolutely necessary to play one move higher here, at 66, as shown in diagrams 5, 6 and 7. White need not fear the cut as he would get compensation on the lower side. In Diagram 5 we see that the hoshi stone from move 4 acts as a ladder-breaker, so that this variation is good for white. In Diagram 6 the variation is clearly good for white. And finally in Diagram 7, White has one more liberty on his group around move 30, so he can link up and make the Black group on the lower side very weak.

55 *Ron Polak*: The weaker move at 54 instead of at 66 may give Black a hope of making his group around move 53 alive in seki.

61 *Ron Polak*: Black welcomes this seki, since it only exists if White can make his corner group live, and this does not look likely.

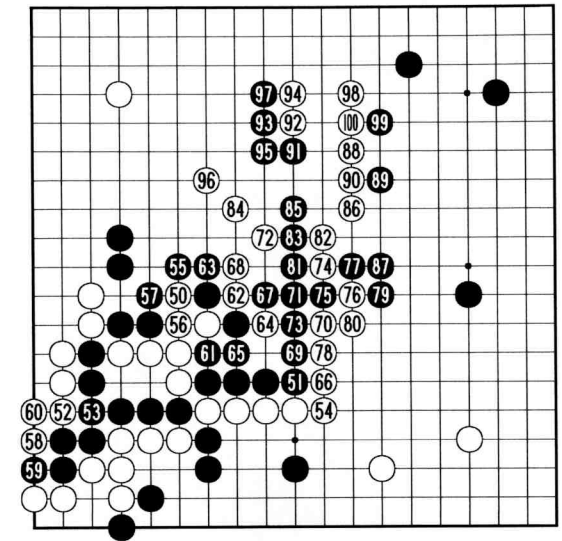


Figure 2: Moves 51-100

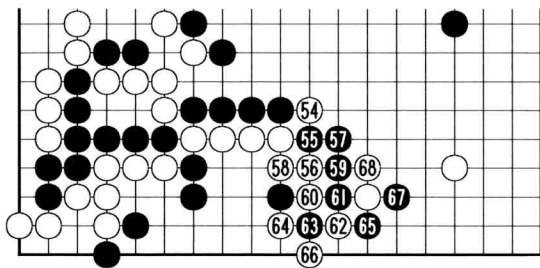


Diagram 5: Variation 1 from move 54

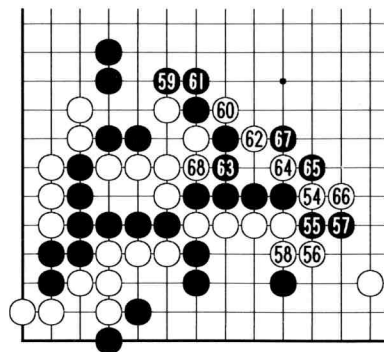


Diagram 6: Variation 2 from move 54

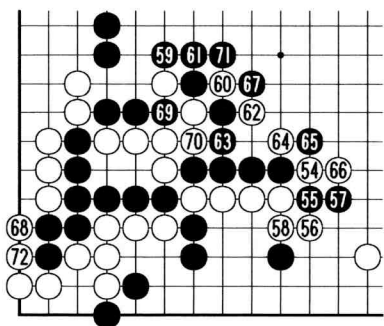


Diagram 7: Variation 3 from move 54

⑥1 *BGAadmin*: The next move is sealed; it is in the referee's pocket while everyone has lunch.

⑥5 *BGAadmin*: Cann has used 100 minutes, Macfadyen 75.

⑦1 *Ron Polak*: This move saves Black from being squashed into an unpleasant dango; since the White lower left corner is dead, Black has killed both this group and the stones which appear to be in seki. The apparently tiny difference of playing move 54 where it is instead of at

⑥6 appears to have been the game-losing move.

⑦8 *Ron Polak*: White tries to catch the central stones, but they will break out. It is a vulgar sequence for Black, but sufficient.

⑥3 *BGAadmin*: White Resigns

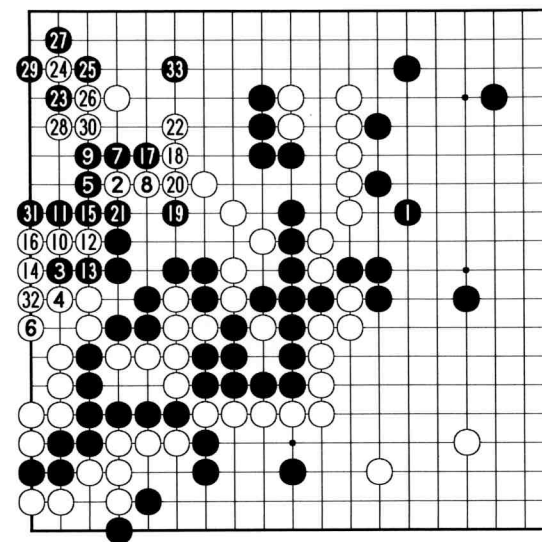


Figure 3: Moves 101-133

EUROPEAN MASTERS 2005

Alexandre Dinerchtein

diners@freemail.ru

The European Masters Tournament pits eight top European players against each other for the chance to play in a variety of Asian tournaments. Alexandre Dinerchtein has provided this exclusive commentary for the 2005 final. For more Dinerchtein commentary, see <http://www.go4go.net/v2/modules/alex/>

White: Radek Nechanicky 6 dan (Czech Republic)

Black: Alexandre Dinerchtein 1 dan pro (Russia)

⑥ (see Figure 1 on page 34) This pattern is unusual; the more common pattern is shown in Diagram 1.

⑦ Black can also consider a low shimari at A.

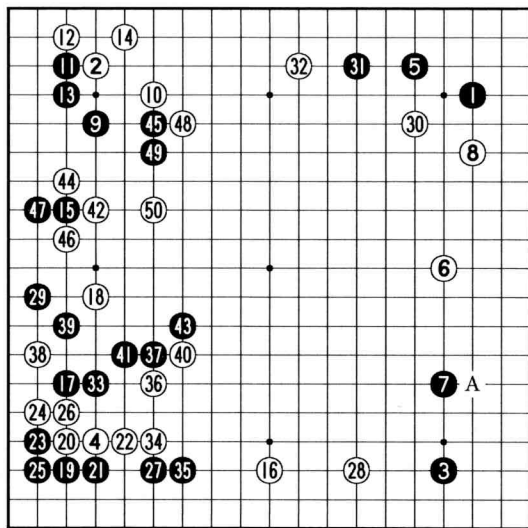


Figure 1: Moves 1–50

⑱ Normally, White has to defend at 34, as shown in Diagram 2.

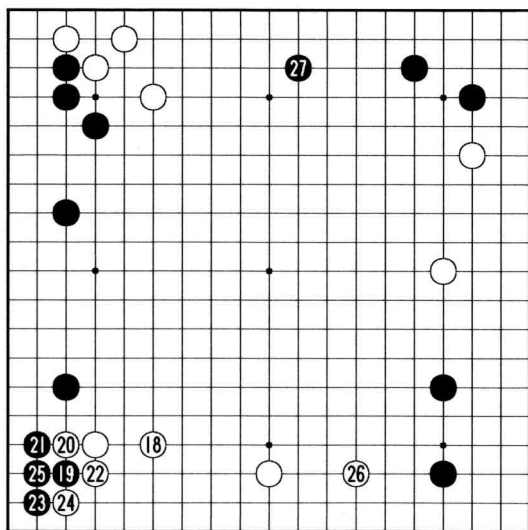


Diagram 2: Variation from move 18

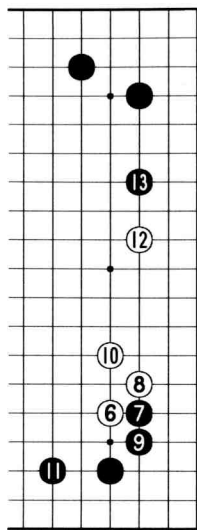


Diagram 1: Variation from move 6

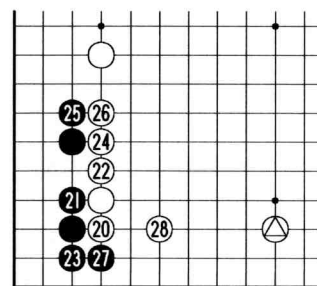


Diagram 3: Variation from move 20

⑳ in Diagram 3 White's wall would be powerful, but the position of △ would be strange.

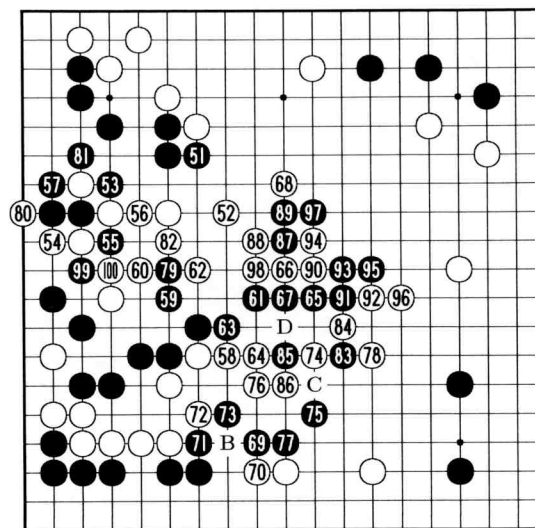


Figure 2: Moves 51–100

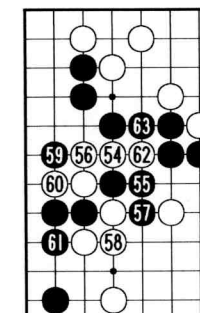


Diagram 4: Variation from move 54

- ⑳ It is probably better to block from the other side, as shown in Diagram 3
- ㉑ A huge move.
- ㉒ White is trying to play actively, but it would be gentle to defend at 33.
- ㉓ The vital point.
- ㉔ An overplay. The nobi at 43 is the only move.
- ㉕ The vital point.
- ㉖ White has no alternative at this point; one option which results in his group being captured is shown in Diagram 4.
- ㉗ White can also defend at 100.
- ㉘ The wrong direction of play. White should first connect his groups at B.
- ㉙ Now the fighting is promising for Black.
- ㉚ An urgent move, defending against the cutting tesuji at 85.
- ㉛ I made a miscalculation here. I thought I could cut off the group including ㉜. I should have played at 92, which is the normal way to continue. The position would be clearly favourable for Black.
- ㉜ I was ready to play the atari at C, but suddenly noticed that White can connect the group easily by taking 85 with D. What a shame! I made a 20kyu mistake here.
- ㉝ White's group becomes strong and the situation changed a lot.

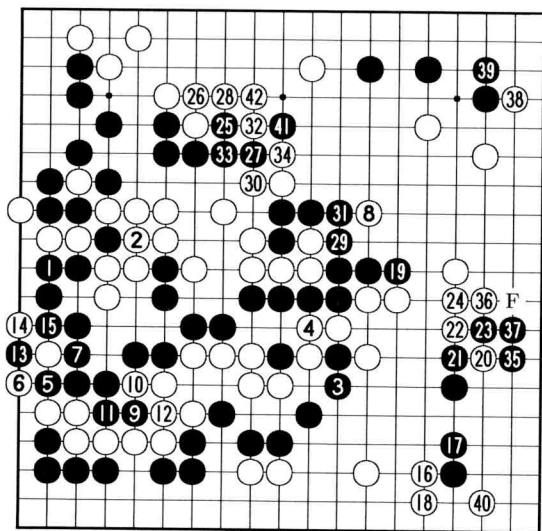


Figure 3: Moves 101-142

White must block at F, preventing the invasion, so the position would be rather close.

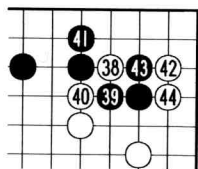


Diagram 5: Variation 1 from move 138

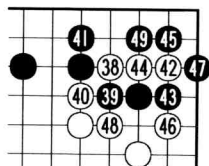


Diagram 6: Variation 2 from move 138

141 It is not easy for White to find the answer.

107 It is really painful for Black to survive like this.

108 If White either extends at 125 or blocks at 119, the game is favourable for him.

109 A huge move, reducing the side and attacking the central group at the same time.

106 A bad exchange for White. In some cases a move at 137 would be a tesuji instead.

103 The wrong direction, as shown in the variations in diagrams 5 and 6.

100 This is the losing move.

144 in Diagram 5 This is the famous tesuji.

149 in Diagram 6 White's construction here would be very powerful.

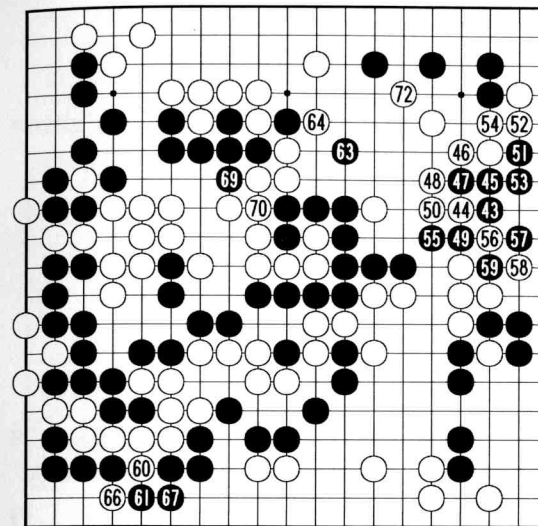


Figure 4: Moves 143-173

Additional moves: 62, 68 and 73 at 56; 65 and 71 at 59.

173 White's territory on the right side is completely destroyed and now Black has a comfortable lead.

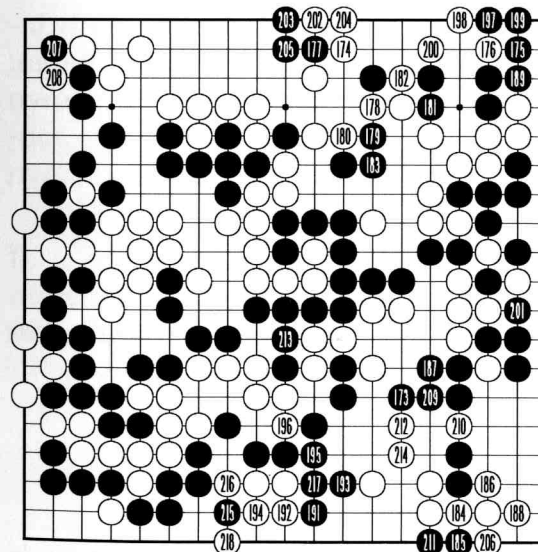


Figure 5: Moves 173-219

220 White resigns.

EUROPEAN CONGRESS 2005

Alexandre Dinerchtein

diners@freemail.ru

Alexandre Dinerchtein provides exclusive commentary for his game against Cho Seok Bin at the European Go Congress in 2005.

For more Dinerchtein commentary, see

<http://www.go4go.net/v2/modules/alex/>

Event: Main European Go Congress Tournament 2005: Round 2

White: Alexandre Dinerchtein 1 dan pro (Russia)

Black: Cho Seok-Bin 7 dan (Korea)

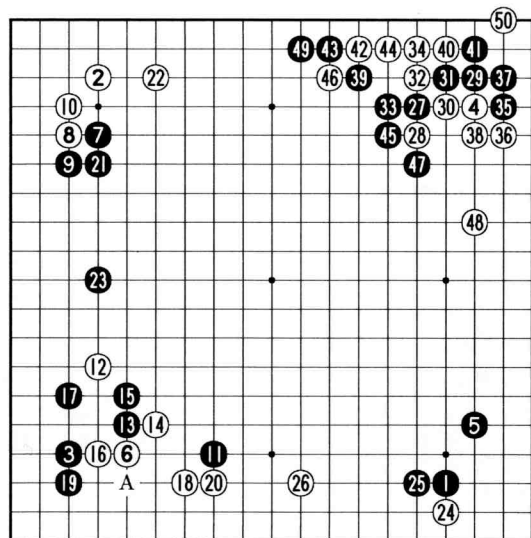


Figure 1: Moves 1–50

②③ Both sides can be satisfied.

②④ A probe.

②⑦ The low kakari at 32 would be better here.

②⑨ It is not easy for Black to find the answer, because the ladder is unfavourable, as shown in Diagram 6. If he plays the variation shown in Diagram 5, the joseki will be bad for him, and △ will be powerful.

⑦ The attachment at A is the most common strategy.

⑪ A good strategy. If Black proceeded as shown in Diagram 1, his position on the top would be over-concentrated.

⑱ A new move, recently invented by Lee Sedol, 9-dan. The standard way is shown in Diagram 2, but I also considered the variation shown in Diagram 3.

⑲ The only move. If Black played the variation in Diagram 4, White's corner would be huge.

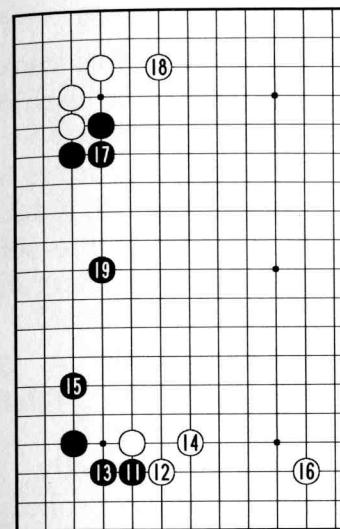


Diagram 1: Variation from move 11.

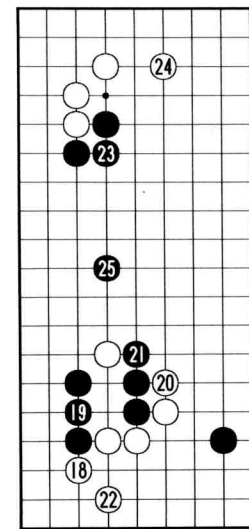


Diagram 2: Variation 1 from move 18.

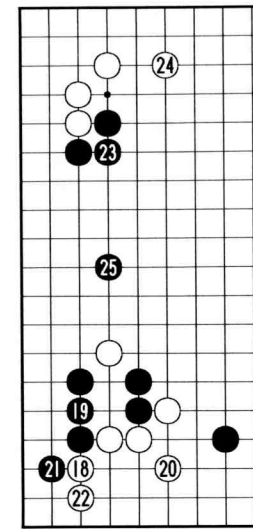


Diagram 3: Variation 2 from move 18.

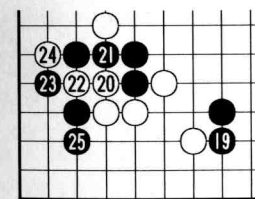


Diagram 4: Variation from move 19.

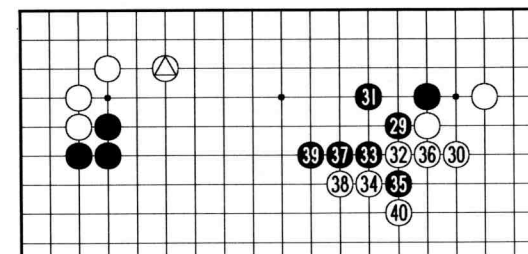


Diagram 5: Variation from move 29.

③④ White can play this way only if the ladder works as demonstrated in Diagram 6.

③⑨ The only move.

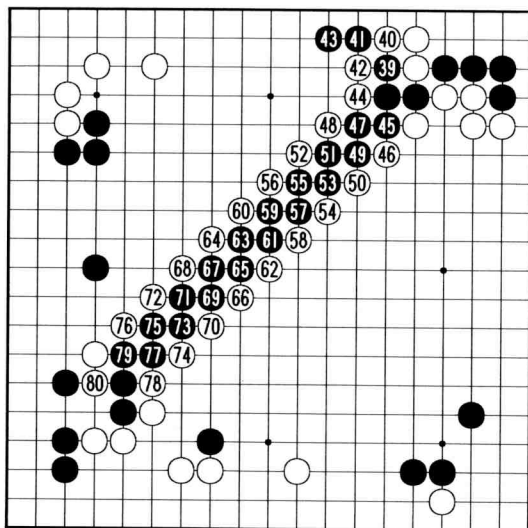


Diagram 6: Variation from move 39.

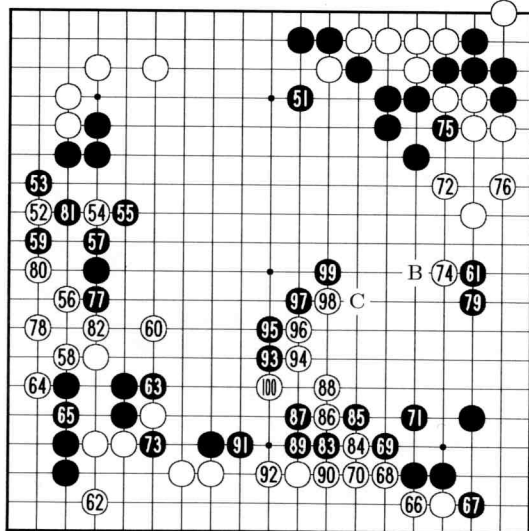


Figure 2: Moves 51-100

⑤1 The result of this joseki is considered to be slightly favourable for White.

⑤2 Too early. It is better to extend solidly at 79, reducing the power of the shimari, as shown in Diagram 7.

⑤7 The vital point.

⑥1 A huge move, preparing for the tesuji at 76.

⑥2 This plan is greedy. It is better to connect solidly, defending this group, as shown in Diagram 8.

⑥3 Now the group around move 60 is rather weak. Black is planning to create central territory by attacking it.

⑦1 Black is playing solidly again. White is slightly ahead on territory, but Black's position is extremely thick.

⑦2 A slow move, but I was trying to prevent the invasion at 76.

⑦3 Ikken tobi at B is the largest place on the board.

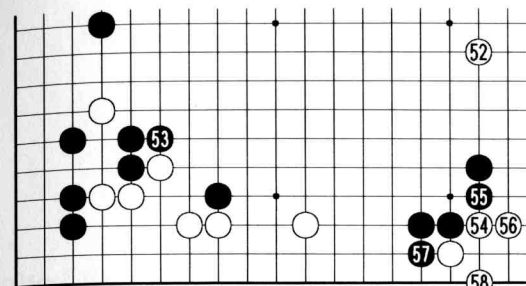


Diagram 7: Variation from move 52.

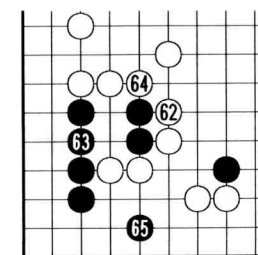


Diagram 8: Variation from move 62.

⑦7 A "thank you move", making White stronger.

⑦8 It seems that Black missed this answer.

⑦9 Black has no other way. If he played as in Diagram 9, the trade would be clearly favourable for White.

⑧4 An overplay. It is better to defend solidly at 89 or 90.

⑧7 The most active answer. I had planned the sequence in Diagram 10.

⑨4 Too heavy. The correct way to survive is shown in Diagram 11, preventing Black from making the central moyo.

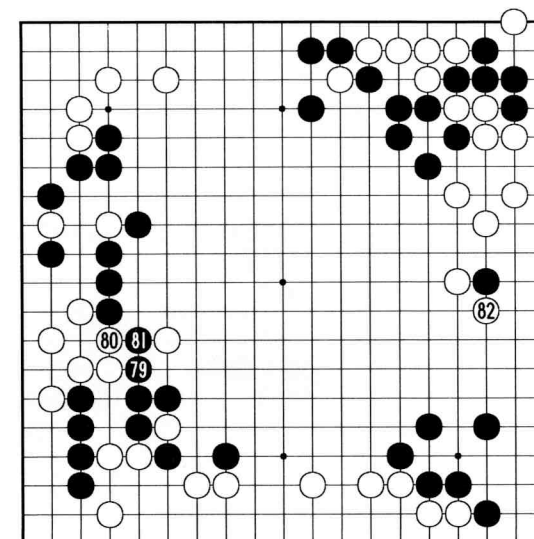


Diagram 9: Variation from move 79.

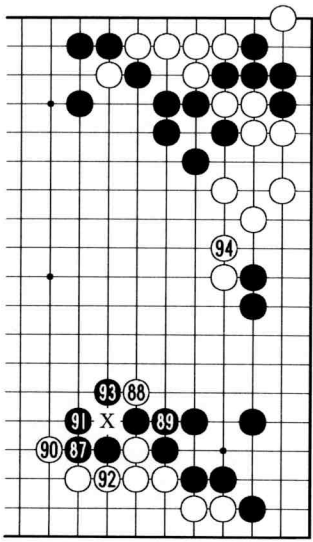


Diagram 10: Variation from move 87. (A stone has been captured at X.)

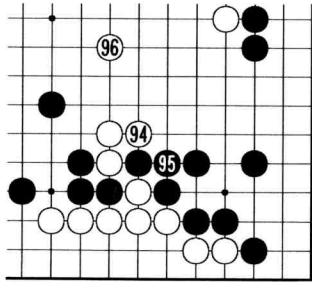


Diagram 11: Variation from move 94.

- ⑨⑥ It is still better to jump at C.
- ⑨⑨ Now White is in trouble.

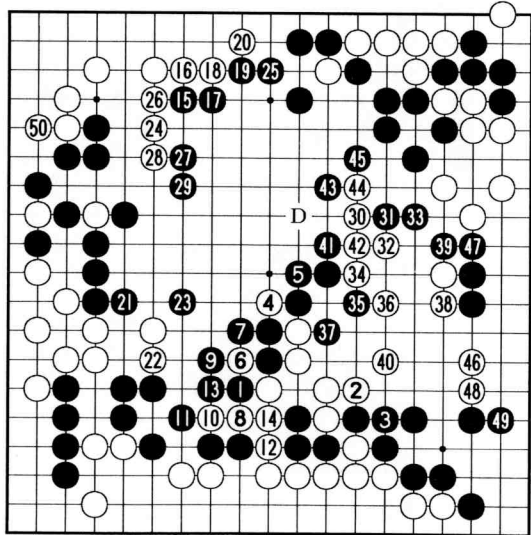


Figure 3: Moves 101-150

- ⑩④ The group is saved, but White cannot be satisfied.
- ⑩③ Black's move makes more than 30 points almost free of charge and now he is leading by a lot.
- ⑩② It is not necessary for Black to play so aggressively. He can win the game by about 5 points by blocking at D.
- ⑩⑤ It is still better to defend the centre.
- ⑩⑩ 143 and 146 are miai. The result of the attack is really terrible for Black.

⑩⑥ A huge reverse-sente move. Now White has a clear 5-point lead. I was lucky!

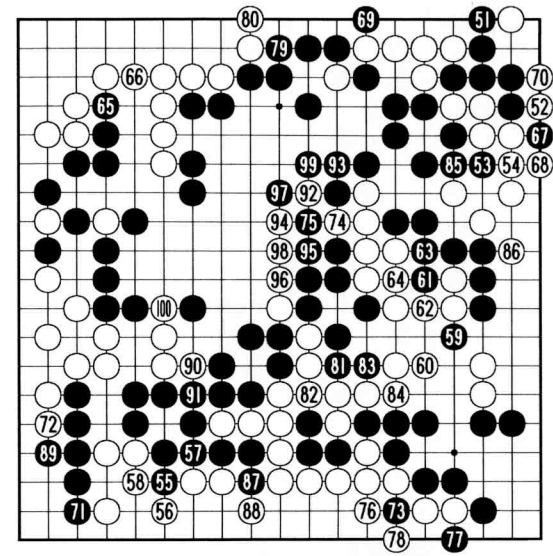


Figure 4: Moves 151-200

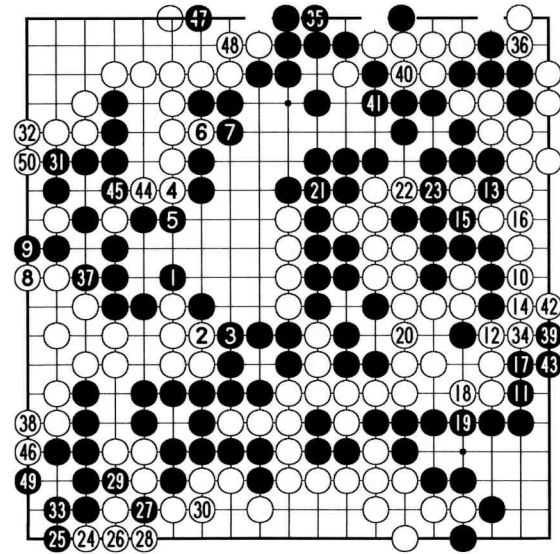


Figure 5: Moves 201-250

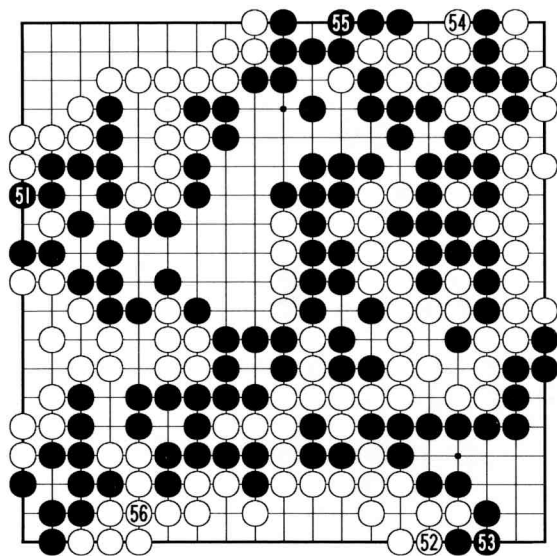


Figure 6: Moves 251–256

Ⓒ White wins by 5.5.

CREDITS

Jenny Radcliffe

journal@britgo.org

Credits

Proofreaders for this issue have included Jon Diamond, Barry Chandler, Edmund Stephen-Smith, Chris Barnett, Ian Davis and Matthew Macfadyen. As ever, much gratitude to them; remaining mistakes are undoubtedly my fault. Thanks also, of course, to the contributors of all kinds of content.

But the biggest credit for this issue existing at all goes unquestionably to Willem Konynenberg, who talked me through performing heart surgery on my hard drive after a little accident with “delete” ... Back-ups are now more routine ...

BGA OFFICIALS

More contact information for these officials, and more information on the jobs they perform (as well as about those for which there is a vacancy), is available on the BGA website at <http://www.britgo.org/officers/>

Council

PRESIDENT – president@britgo.org – Ron Bell
 TREASURER – treasurer@britgo.org – Steve Bailey
 SECRETARY – secretary@britgo.org – Fred Holroyd
 COUNCIL MEMBER – council-bashforth@britgo.org – Stephen Bashforth
 COUNCIL MEMBER – council-brunswick@britgo.org – Brian Brunswick
 COUNCIL MEMBER – council-griffiths@britgo.org – Anna Griffiths
 COUNCIL MEMBER – council-hunt@britgo.org – Tim Hunt

Committees and Officials

AUDITOR – auditor@britgo.org – Alison Bexfield

The President is acting chairman of any committee where a vacancy is shown.

Book Seller’s Committee – Chair: Gerry Mills

BOOK SELLER – bga-books@britgo.org – Gerry Mills
 BOOK SELLER’S ADVISER – bga-books@britgo.org – Bob Bagot
 JOURNAL BACKNUMBERS SERVICE – past-journals@britgo.org – David Hall

Clubs and Membership Committee – Chair: Vacancy

MEMBERSHIP SECRETARY – membership@britgo.org – Kathleen Timmins
 RECRUITMENT – membership@britgo.org – Vacancy

CLUB DEVELOPMENT – membership@britgo.org – Vacancy
STUDENT DEVELOPMENT – membership@britgo.org – Edwin Brady
REGIONAL REP SCOTLAND – John O'Donnell
REGIONAL REP SOUTH WEST & SOUTH WALES – Gerry Mills
REGIONAL REP NORTH-WEST – Robin Hobbes
REGIONAL REP NORTH-EAST – Matthew Holton
REGIONAL REP WEST MIDLANDS & NORTH WALES –
mem@britgo.demon.co.uk – Brian Timmins
REGIONAL REP EAST MIDLANDS – Vacancy
REGIONAL REP EAST ANGLIA – Vacancy
REGIONAL REP SOUTHERN ENGLAND – Tony Atkins
REGIONAL REP LONDON & SOUTH EAST – Paul Margetts
REGIONAL REP IRELAND – John Gibson

Journal and Newsletter Committee – Chair: Brian Timmins

JOURNAL EDITOR – journal@britgo.org – Jenny Radcliffe
JOURNAL CONTRIBUTIONS SEEKER – journal@britgo.org –
Vacancy
JOURNAL GAMES EDITOR – journal@britgo.org – Barry Chandler
JOURNAL TYPESETTING – journal@britgo.org – Jenny Radcliffe
JOURNAL PRINTING – journal@britgo.org – Jenny Radcliffe
JOURNAL PROOF READERS – journal@britgo.org – Various
NEWSLETTER EDITOR – newsletter@britgo.org – Jil Segerman
NEWSLETTER PROOF READER – newsletter@britgo.org – Tony
Atkins
NEWSLETTER DISTRIBUTION – newsletter@britgo.org – Steve Bai-
ley
YOUTH NEWSLETTER (EX-OFFICIO) – youth-news@britgo.org –
Stephen Bashforth

Player Development Committee – Chair: Tony Atkins

NATIONAL TRAINER – tourn-coord@britgo.org – Tony Atkins
officialtitleAnalysis service – analyst@britgo.org – David Ward
TRAINING CONSULTANT – trainer@britgo.org – Matthew Mac-
fadyen
SHODAN CHALLENGE – Stephen Bashforth

DOUBLE FIGURE KYU SUPPORT – education@britgo.org – Peter
Wendes
TEACHING IN CLUBS – Vacancy
TEACHING EVENTS – Vacancy

Publicity Committee – Chair: Peter Wendes

PUBLICITY OFFICER – Peter Wendes
PRESS OFFICER – Peter Wendes
GO COLUMNISTS – Julian Davies and Henry McGuinness
SOCIAL EVENTS – Sheila Wendes
ARCHIVIST – archivist@britgo.org – Les Bock
EXHIBITIONS – exhibitions@britgo.org – Adam Atkinson
MIND SPORTS COUNCIL REP – youth-devel@britgo.org – Paul
Smith
CENTRAL COUNCIL FOR PHYSICAL RECREATION REP –
youth-devel@britgo.org – Paul Smith

Tournament Committee – Chair: Geoff Kaniuk

TOURNAMENT COORDINATOR – tourn-coord@britgo.org – Tony
Atkins
TOURNAMENT EQUIPMENT – tourn-coord@britgo.org – Tony
Atkins
CHAMPIONSHIPS ORGANISER – championships@britgo.org – Ge-
off Kaniuk
TOURNAMENT RESULTS – results@britgo.org – Geoff Kaniuk
DRAW PROGRAM MAINTAINER – draw-program@britgo.org – Geoff
Kaniuk
REFEREE TRAINING – draw-program@britgo.org – Geoff Kaniuk
LONDON OPEN COORDINATOR – draw-program@britgo.org –
Geoff Kaniuk
BRITISH GO CONGRESS COORDINATOR – treasurer@britgo.org –
Steve Bailey
ON-LINE GO COORDINATORS – Ian Davis and Stuart Barthropp

Web Site Committee – Chair: Vacancy

WEB RENEWAL PROJECT MANAGER –
council-griffiths@britgo.org – Anna Griffiths

WEB RENEWAL – council-brunswick@britgo.org – Brian
Brunswick and Barry Chandler
WEBMASTER – webmaster@britgo.org – Tim Hunt
WEB SITE EDITOR – webmaster@britgo.org – Tony Atkins
WEB NEWS EDITOR – webmaster@britgo.org – Tony Atkins
CLUB LIST EDITOR – council-brunswick@britgo.org – Brian
Brunswick
CD EDITOR – cd-editor@britgo.org – Jon Diamond
AGA E-JOURNAL DISTRIBUTOR – aga-ejournal@britgo.org – Tim
Hunt
JUNIOR WEB SITE EDITOR – youth-devel@britgo.org – Paul Smith
WEB SITE INDEXER – Jochen Fassbender
GOTALK MODERATOR – Andrew Walkinshaw

Youth Committee – Chair: Ron Bell

EDUCATION OFFICER – education@britgo.org – Peter Wendes
YOUTH DEVELOPMENT – youth-devel@britgo.org – Paul Smith
YOUTH NEWSLETTER – youth-news@britgo.org – Stephen Bash-
forth
UK GO CHALLENGE – info@ukgochallenge.com – Tony Atkins
CHILD PROTECTION ADVISER – child-protection@britgo.org –
Sue Paterson
JUNIOR WEB SITE EDITOR (EX-OFFICIO) – youth-devel@britgo.org
– Paul Smith
YOUTH REP SCOTLAND – Vacancy
YOUTH REP SOUTH WEST & SOUTH WALES – Neil Moffat
YOUTH REP NORTH-WEST – Bob Bagot
YOUTH REP NORTH-EAST – Matthew Holton
YOUTH REP WEST MIDLANDS – Mike Lynn
YOUTH REP EAST MIDLANDS – Toby Manning
YOUTH REP EAST ANGLIA – youth-devel@britgo.org – Paul Smith
YOUTH REP THAMES VALLEY – Tony Atkins
YOUTH REP SOUTHERN ENGLAND – Peter Wendes
YOUTH REP LONDON & SOUTH EAST – Francis Roads
YOUTH REP IRELAND – Ian Davis

UK CLUBS LIST

This list is available, up-to-date, with a map of the UK, email contacts
and links to club webpages, is at
<http://www.britgo.org/clublist/clubsmap.html> Please send cor-
rections and all new or amended information to Brian Brunswick at
council-brunswick@britgo.org

ABERDEEN: Meets: Monday 18:00, Room 405, Zoology building,
University of Aberdeen, Aberdeen, AB24 2TZ.

BARMOUTH: (Also called West Wales) Baron Allday, 01341 280365.
Meets: Meets by arrangement.

BATH: Paul Christie, 01225 428995. Meets: Tuesday 19:30, The
Rummer, Grand Parade, Bath, BA2 4DF. In the centre of Bath, near
Pultney Bridge.

BELFAST AREA: Ian Davis, 07952 184010. Meets: Thursday Evenings,
by arrangement; Tuesday, Wednesday, Friday during lunch, 9
Lanyon Place, Belfast, (contact Ian to gain admission to the building).

BILLERICAY: (Also called Essex) Guy Footring, 01277 623305. Meets:
Monday evening.

BIRMINGHAM: No longer meets..

BOLTON: Meets: Tuesday 7:30pm, Upstairs in The Gypsy's Tent pub,
178 Deansgate, Bolton, BL1 4AB. On the corner of Deansgate and
Moor Lane.

BOURNEMOUTH: Marcus Bennett, 01202 512655. Meets: Tuesday
20:00, 24 Cowper Road, Moordown, Bournemouth, BH9 2UJ.

BRACKNELL: Clive Hendrie, 01344 422502. Tuesday 20:30, The
Duke's Head, 56 Denmark Street, Wokingham, Berkshire, RG40 2BQ.

BRADFORD: Ewen Pearson, 01274 598980. Wednesday 19:30, The
Noble Comb, Quayside, Salts Mill Road, Shipley, BD18 3ST.

BRIGHTON: Granville Wright, 01444 443599. Tuesday 20:00, Queens
Head, 69 Queens Rd, Brighton, East Sussex, BN1 3XD. Close to the
railway station.

BRISTOL: Paul Atwell, 0117 949 0924, 0117 908 9622 (fax), 0781 195364. Wednesday 19:30, Ex-servicemen's Club, 50 St Paul's Road, Clifton, Bristol, BS8 1LP.

CAMBRIDGE CHESS AND GO CLUB: Paul Smith, 01223 563932. Wednesday 18:15-20:15.

CAMBRIDGE UNIVERSITY AND CITY: Jonathan Medlock, 01223 519431. Monday during University terms, from 20:00, The Buttery, Clare College, Cambridge, CB2 1TL; Thursday 19:00-21:00, Reading Room adjacent to Coffee Lounge, 3rd floor, the University Centre, Mill Lane, Cambridge, CB2 1RU; Friday 19:00-21:00, CB1, 32 Mill Road, Cambridge, CB1 2AD; Saturday 17:00 onwards. Informal meetings at CB1, 32 Mill Road (normally); Sunday 16:00 onwards.

CANTERBURY: Kevin, 0870 224 1630. Sunday 13.00-17.00, Palace Street Café, 22 Palace Street, Canterbury, CT1 2DZ.

CARDIFF: (Also called South-East Wales) Neil Moffatt, 0292 0412539. Tuesday 19:00, County Bar, Back of County Hall, Wharf, Cardiff Bay.

CHELTENHAM: David Killen, 01242 576524. Thursdays 19:30, Meets various places.

CHESTER: Tony Pitchford, 01925 730583. Wednesday 20:00, Ye Olde Custom House Inn, 65-67 Watergate Street, Chester, CH1 2LB.

CHESTER: Tamsin Jones, 01244 344829. Meetings by arrangement, Tamsin Jones's home.

DEVON: (Also called Exeter) Tom Widdicombe, 01364 661470. Meetings by arrangement.

DUBLIN COLLEGIANS: Monday and Wednesday 21:00-24:00, Pembroke Pub, 31 Lower Pembroke Street, Dublin 2. Off Baggot Street.

DUNDEE: Rich Philp, 01382 202283. Monday from 20:00, Mennie's, aka the Speedwell Bar, 165-167 Perth Road, DD2 1AS.

DURHAM: Monday 20:30, The Bar, Ustinov College, Howlands Farm, Durham, DH1 3TQ; Thursday 19:30, beginners' teaching, contact club for details.

EDINBURGH: Phil Blamire, 0131 663 0678. Wednesdays 19:30, Alan Crowe's flat (1F1), 34 Haymarket Terrace (possibly); Thursday 19:00, Harlequin Cafe, Buccleuch Place, EH8 9LP.

EPSOM: Paul Margetts, 01372 723 268. Wednesday 19:00-22:30, 7 Ripley Way, Epsom, Surrey, KT19 7DB. Check with Paul first.

FARNBOROUGH VILLAGE: Brian Dackombe, 01689 857944. Meetings by arrangement. Near Bromley.

FIFE: (Also called West Fife) Alternate Mondays, as far as possible.

GLASGOW: John O'Donnell, 0141 339 0458 (home), 0141 330 5458 (work). Wednesday 20:00 except during holidays, The Research Club, Hetherington House, 13 University Gardens, University of Glasgow, G12 8QQ.

HASTINGS: (Also called Eastbourne) Patrick Donovan, 01323 640552. Meetings by arrangement.

HEWLETT-PACKARD BRISTOL: Andy Seaborne, 0117 950 7390 (home), 0117 312 8181 (work). Wednesday and Friday 12:00, Hewlett Packard. Please contact in advance to ensure there are players available.

HULL: Mark Collinson, 01482 341179. Irregular Wednesdays, 12 Fitzroy St, Beverley Rd, Hull, HU5 1LL. Phone for details.

ISLE OF MAN: David Phillips, 01624 612294. Wednesday 19:30; Sunday 19:30.

LANCASTER: (Also called Gregson) Adrian Abrahams, 01524 34656. Wednesday 19:30, Gregson Community Centre, 33 Moorgate, Lancaster, LA1 3PY.

LEAMINGTON: Matthew Macfadyen, 01926 624445. Thursday 19:30, 22 Keytes Lane, Barford, Warwickshire CV35 8EP.

LEICESTER: Toby Manning, 01530 245298. Thursdays 19:45, Mayfield, Station Road, Kirby Muxloe, Leicester.

LIVERPOOL: George Leach, 07739 897172; Jason Leather, 07900 308996. Sunday 19:00-23:00, The Ship and Mitre, 133 Dale Street, Liverpool, L2 2JH.

LONDON SCHOOL OF ECONOMICS: Azan Aziz Marwah, 07931 332 025. Wednesday (during term) lunchtime or early afternoon, contact for confirmation.

LONDON, CENTRAL: Jonathan Turner, 07968 538881 (mobile). Saturday 14:00–22:00, International Student House, 229 Great Portland Street, Regent's Park, London, W1W 5PN.

LONDON, EAST: (Also called Wanstead) Alistair Wall, 020 8556 4232. Thursday 19:15, Wanstead House, 21 The Green, Wanstead, E11 2NT.

LONDON, IMPERIAL COLLEGE: (Also called Imperial College) Contact club for details.

LONDON, NEW MALDEN: (Also called New Malden Baduk Hall) J. K. Shim, 07881 908 730 (mobile); Mr. Kim, 07795 184 272 (mobile). Every day from 11:00am to 11:00pm, At the rear of Park Jun's Beauty Shop, 9 Coombe Road, New Malden, KT3 4PX. Right by New Malden train station. Enter through the shop (follow the green signs) or through the gate from the service road at the rear. Contact for confirmation.

LONDON, NORTH: Kevin Campbell, 01442 262251 (home), 07801 270 342 (mobile). Tuesday 19:30, Gregory Room, Parish Church, Church Row, Hampstead, NW3 6UU.

LONDON, NORTH WEST: David Artus, 0208 841 4595. Thursday 19:00–22:00, Greenford Community Centre, 170 Oldfield Lane South, Greenford, UB6 9JS. South of A40.

LONDON, SOUTH WOODFORD: (Also called Woodford) No longer meets.

LONDON, TWICKENHAM: (Also called Twickenham) Colin MacLennan, 020 8941 1607. Wednesday 20:00, Pope's Grotto hotel, Cross Deep, Twickenham, Middlesex, TW1 4RB.

MAIDENHEAD: Iain Attwell, 01628 676792. Friday 20:00, Meets various places.

MANCHESTER: Chris Kirkham, 0161 903 9023. Thursday 19:45, The Town Hall Tavern, 20, Tib Lane, Manchester, M2 4JA.

MID-CORNWALL: Paul Massey, 01209 891093, 07966 474 686. Monday 20:00, 5 Trekye Cove, Sandy Road, Porthtowan, Truro, TR4 8UL.

MIDDLESBROUGH: (Also called Teesside) Gary Quinn, 01642 384303. Friday 12:00, University of Teesside.

MILTON KEYNES: (Also called Open University) Fred Holroyd, 01908 315342. Monday 12:30, The Berrill Cafe, The Open University, Walton Hall, Milton Keynes, MK7 6AA; Monday 18:30, The Wetherspoons pub, 201 Midsummer Boulevard, Central Milton Keynes, MK9 1EA.

MONMOUTH: Gerry Mills, 01600 712934. Meetings by arrangement.

NEWCASTLE: John Hall, 0191 285 6786. Wednesday.

NORWICH AND NORFOLK: Tony Lyall, 01603 613698. unknown.

NOTTINGHAM: Jo Kling, Wednesdays 19:30, Crown Inn, Church Street, Beeston, Nottingham, NG9 1FY. Please check with the club secretary before attending.

OXFORD CITY: Harry Fearnley 01865 248775(h), 01865 273928(w). Tuesday and Thursday 19:00–22:30, Freud's Café, 119 Walton Street, Oxford, OX2 6AH.

OXFORD UNIVERSITY: Wednesday 19:30–23:00 in termtime only, The Arts Room, Trinity College, Broad Street, Oxford, OX1 3BH. If the door to Trinity is shut, press the buzzer and tell the porters you are going to go society. All are welcome.

PENZANCE: (Also called West Cornwall) John Culmer, 01326 573167. Thursday 20:00, Flat 3, 1 Causewayhead, Penzance, TR18 2SN.

PURBROOK (NEAR PORTSMOUTH): Peter Wendes, 02392 267648. Most Thursday evenings, Normally Peter's house, but if he is away Mike and Suzi's. Phone to confirm.

READING: Jim Clare, 0118 9507319. Monday 18:30, Brewery Tap, 27 Castle Street, Reading, RG1 7SB.

SHEFFIELD: Phil Barker, 0114 2551440. Sunday 19:30, Devonshire Arms, 118 Ecclesall Road, Sheffield, S11 8JB.

SOUTHAMPTON: Meets irregularly. Email if you would like to meet for a game.

ST ALBANS: Mike Cockburn, 01727 834035; Alan Thornton, 01442 261945; Richard Mullens, 01707 323629, 07816 372001. Wednesday 20:00 (players normally present from 19:30), The White Lion, 91 Sopwell Lane, St Albans, AL1 1RN. Non-regular visitors should ring to confirm a meeting.

ST ANDREWS: Edwin Brady,. Wednesday 20:00, Aikman's Cellar Bar, 32 Bell Street, St Andrews KY16 9UX; Any lunchtime by arrangement.

SWANSEA: Sam Woodward, 01792 470071. Sunday 15:30, JC's Pub, Fulton House, Swansea University Campus, Singleton Park, Swansea, SA2 8PP.

SWINDON: David King, 01793 521625. Wednesday 19:30, Prince of Wales, Coped Hall Roundabout, Wootton Bassett, SN4 8EP.

TAUNTON: Seems to have ceased to exist.

WALSALL GO CLUB: Paul Trebbett, 01922 429349. Meetings by arrangement, Can cover Birmingham to Wolverhampton and points above & below..

WARWICK UNIVERSITY: Tuesday during University term 17:00–20:00, Room B2.09; Saturday during University term from 12:00, The Graduate. Email first, this meeting does not always happen.

WEST SURREY: (Also called Guildford) Pauline Bailey, 01483 561027. Monday 19:30–22:00 except bank holidays.

WINCHESTER: (Also called Hursley) Alan Cameron, 01794 524430 (home), 07768 422082 (work). Wednesday 19:00, The Black Boy Public House, 1 Wharf Hill, Bar End, Winchester, SO23 9NQ. Just off the M3.

WOODLEY: Tony Atkins, 0118 9268143. Some Saturdays and Sundays 18:00.

WORCESTER AND MALVERN: Edward Blockley, 01905 420908. Wednesday 19:30.

YEOVIL: Julian Davies, 01935 423046. Thursday 19:45, Mason's Arms, 41 Lower Odcombe, Odcombe, Yeovil BA22 8TX.

YORK: Wednesday 19:30, El Piano cafe, Grape Lane, York. .

YORK UNIVERSITY: Tuesday 20:15, Room G/045, Goodricke College, University of York, Heslington, York, YO10 5DD.

GLOSSARY OF GO TERMS

This glossary is in no way complete. More extensive descriptions of these terms, and many other terms, may be found at Sensei's Library (<http://senseis.xmp.net/>).

AJI: latent possibilities left in a position

AJI KESHI: a move which destroys one's own aji (and is therefore bad)

ATARI: having only one liberty left: stones are said to be "in atari" when they can be captured by the enemy's next move

BYO YOMI: formally, the "seconds-counting" during over-time periods; used informally (and both inaccurately and confusingly) to mean over-time periods in general

DAME: a neutral point; a point of no value to either player

GOTE: losing the initiative

HANE: a move that "bends round" an enemy stone leaving a cutting point behind

HOSHI: one of the nine marked points on the Go board

IKKEN TOBI: a one-point jump

JIGO: a drawn game

JOSEKI: a standardised sequence of moves, usually in a corner

KEIMA: a knight's-move jump

KIKASHI: a move which creates aji while forcing a submissive reply

KOMI: a points allowance given to compensate White for playing second

KOSUMI: a diagonal play

MIAI: two points related such that if one player takes one of them, the opponent will take the other

MOYO: a framework which could potentially become territory

NAKADE: a move played inside an enemy group at the vital point of the principal eye-space to prevent it from making two eyes

NOBI: a solid extension; a move directly next to another stone of the same color to create a line of at least two stones.

PONNUKI: the diamond shape left behind after a single stone has been captured

REVERSE-SENTE: a play which forestalls a sente move of your opponents'

SABAKI: a sequence that produces a light, resilient shape

SAN REN SEI: an opening which consists of playing on the three hoshi points on one side of the board

SANSAN: the "3,3" point in the corner of the board

SEKI: a local stalemate between two or more groups dependent on the same liberties for survival

SEMEAI: a race to capture between two adjacent groups that cannot both live

SENTE: gaining the initiative; a move that requires a reply

SHIMARI: a corner enclosure of two stones

SHODAN: one dan level

TENGEN: the centre point of the board

TENUKI: to abandon the local position and play elsewhere

TESUJI: a skillfull and efficient mnove in a local fight

YOSE: the end game

©BGA 2006. Articles may be reproduced for the purposes of promoting Go and not for profit providing the British Go Journal is acknowledged and the permission of the Editor and of the articles' author(s) have been sought and obtained. All other rights reserved.

Views expressed are not necessarily those of the BGA or of the Editor.